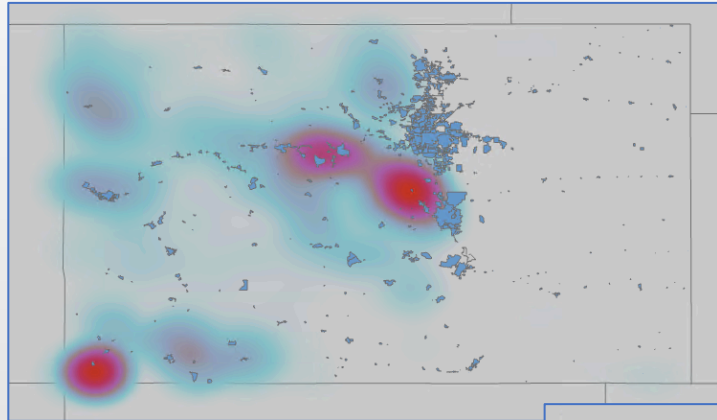
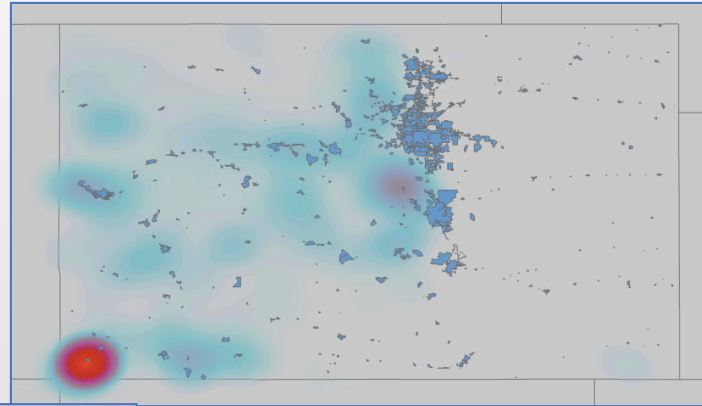


Spatio-temporal Trends in Human Caused Wildfires in Colorado: 1980-2016

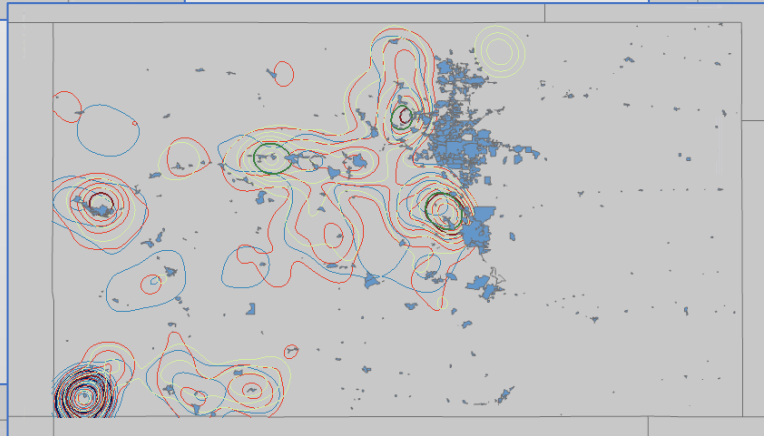
Alex Floeckher, Department of Geography and Geographic Information Sciences, alexjf2@Illinois.edu



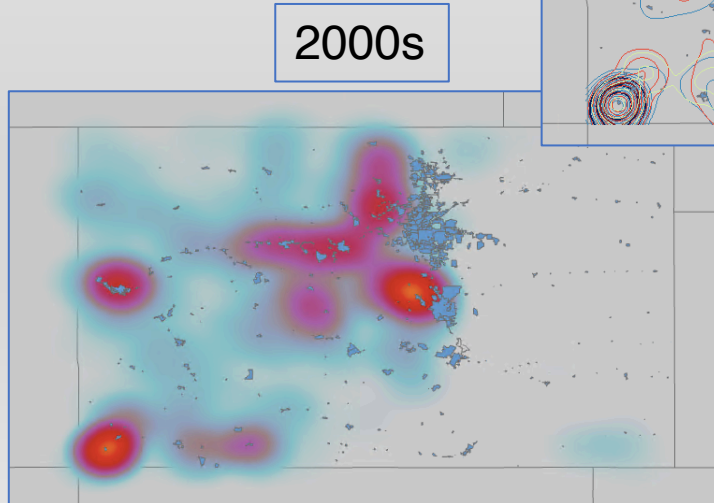
1980s



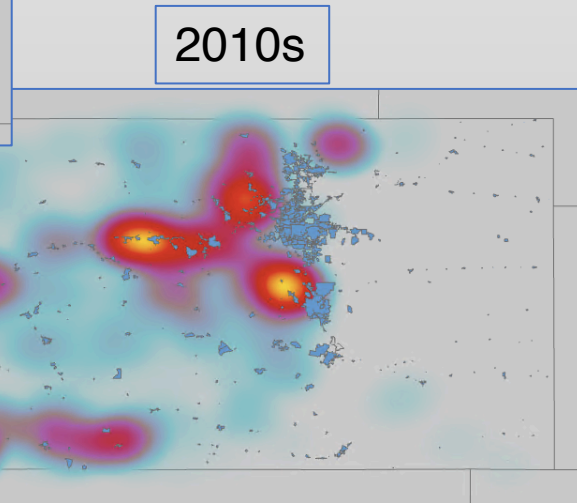
1990s



Kernel Density
Overlay of all
Four Decades



2000s



2010s

Background:

There have been 45,000 wildfires in 2020. Many are caused by humans. Is there any pattern to where the fires occur?

Kernel Density:

By using a kernel density plot contour lines, you can see how the locations of dense wildfires have changed over time.

Conclusions:

- Frequency has increased.
- Shifted toward population center.
- Populated areas have more human caused fires.

Data Sources:

USGS, US Department of the Interior, NIFC