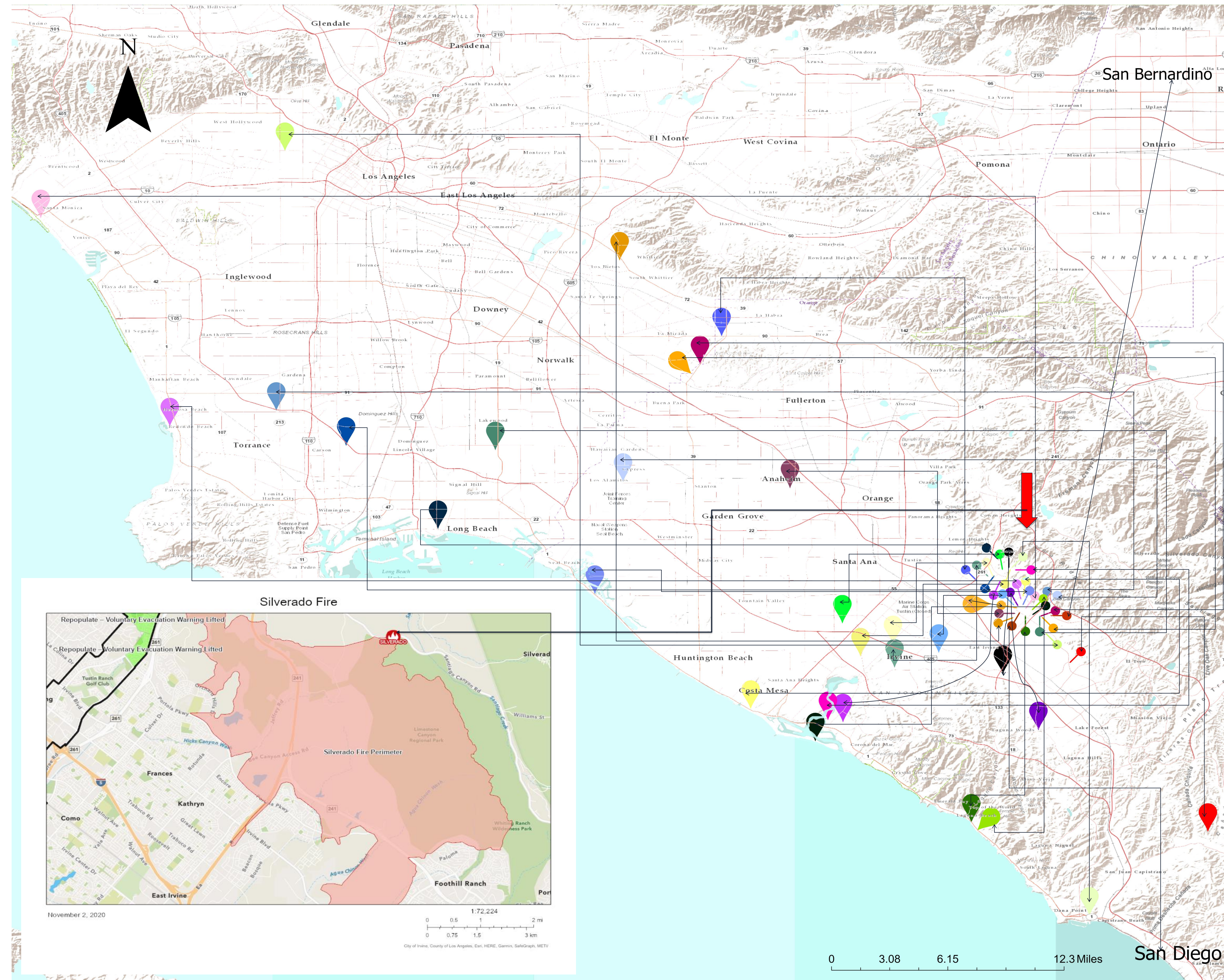


Evacuation Location in Response to Silverado Wildfire Incident

Minkyu Kim,

Department of Geography and Geographic Information Science, College of Liberal Arts & Sciences, University of Illinois at Urbana-Champaign

Evacuation Location of their Original place to Final Destination



Orange County Fire Authority firefighters defend homes as Silverado fire approaches in Orchard Hills neighborhood

Introduction

- On October 26, 2020, at 7 am a vegetation fire originated in the district of Santiago Canyon Road.
- As a resident in the Irvine and Orchard Hills community, I was placed under mandatory evacuation orders because of Silverado Fire.
- All mandatory evacuations were lifted in Irvine late Wednesday.

Question

- What was the spatial pattern of evacuation locations?

Methods

- I conducted a survey collecting evacuation location information from friends, friends of friends, relatives, and neighbors.
- Latitude and longitude data was anonymized from the actual geocoded positions to preserve privacy.

Results

- Does a Pattern exist? - People tended to evacuate toward the coast
- People evacuating toward the coast generally stayed in hotels: Long Beach, Laguna Beach, Newport Beach, Huntington Beach, Santa Monica, San Diego, Dana Point
- People evacuating inland generally stayed at second homes or with relatives.
- Several evacuation orders remained until Wednesday.

Sources

Silverado Fire Perimeter Source: <https://arcg.is/mP0ia>
<https://www.directrelief.org/2020/10/more-blazes-erupt-in-southern-california-displacing-thousands/>

Contact Information

minkyuk2@illinois.edu