

The Spatial Distribution of Confederate Symbols and Race in Louisiana

Jacqueline Shon

Department of Geographic Information Science, College of Liberal Arts and Sciences, University of Illinois at Urbana-Champaign

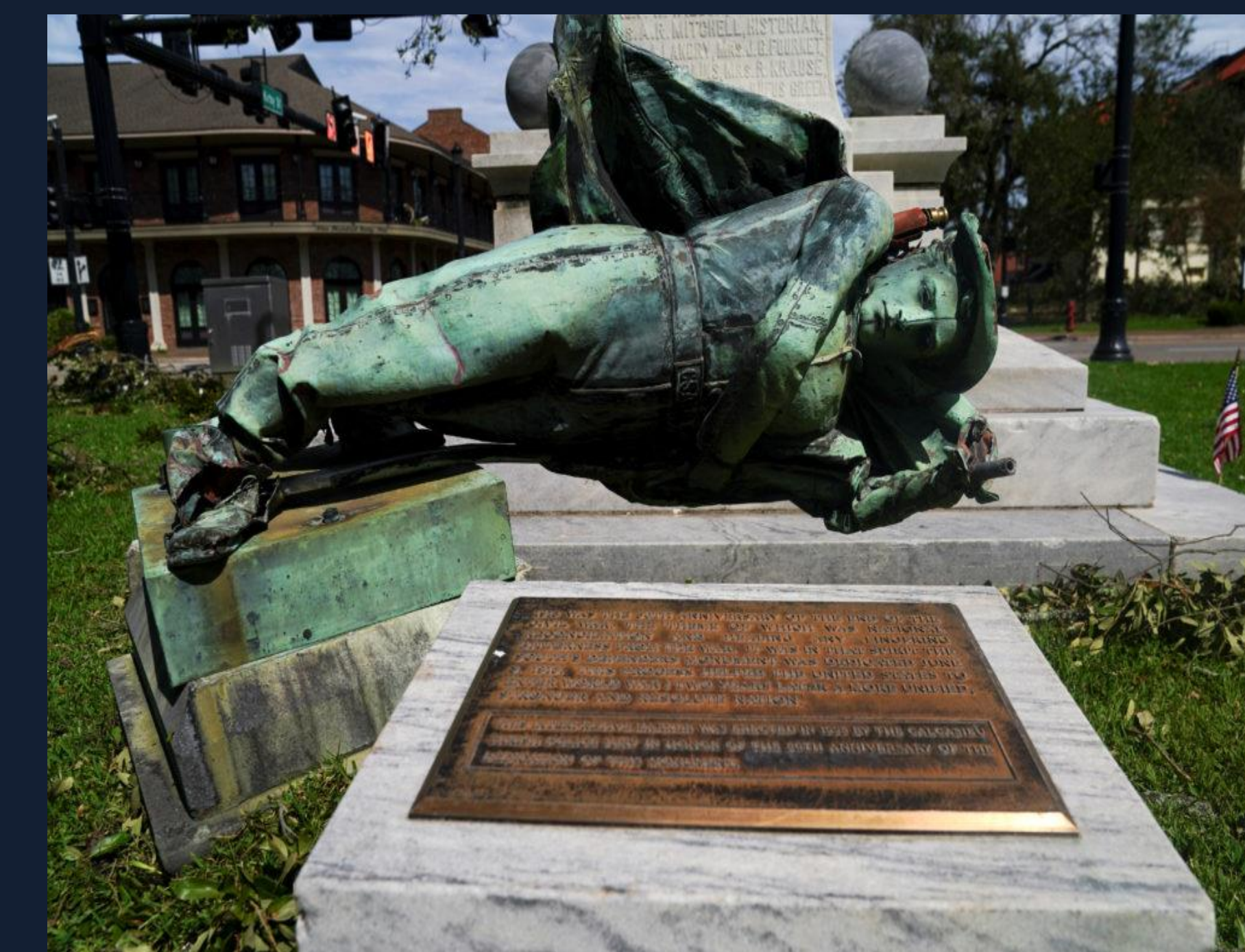
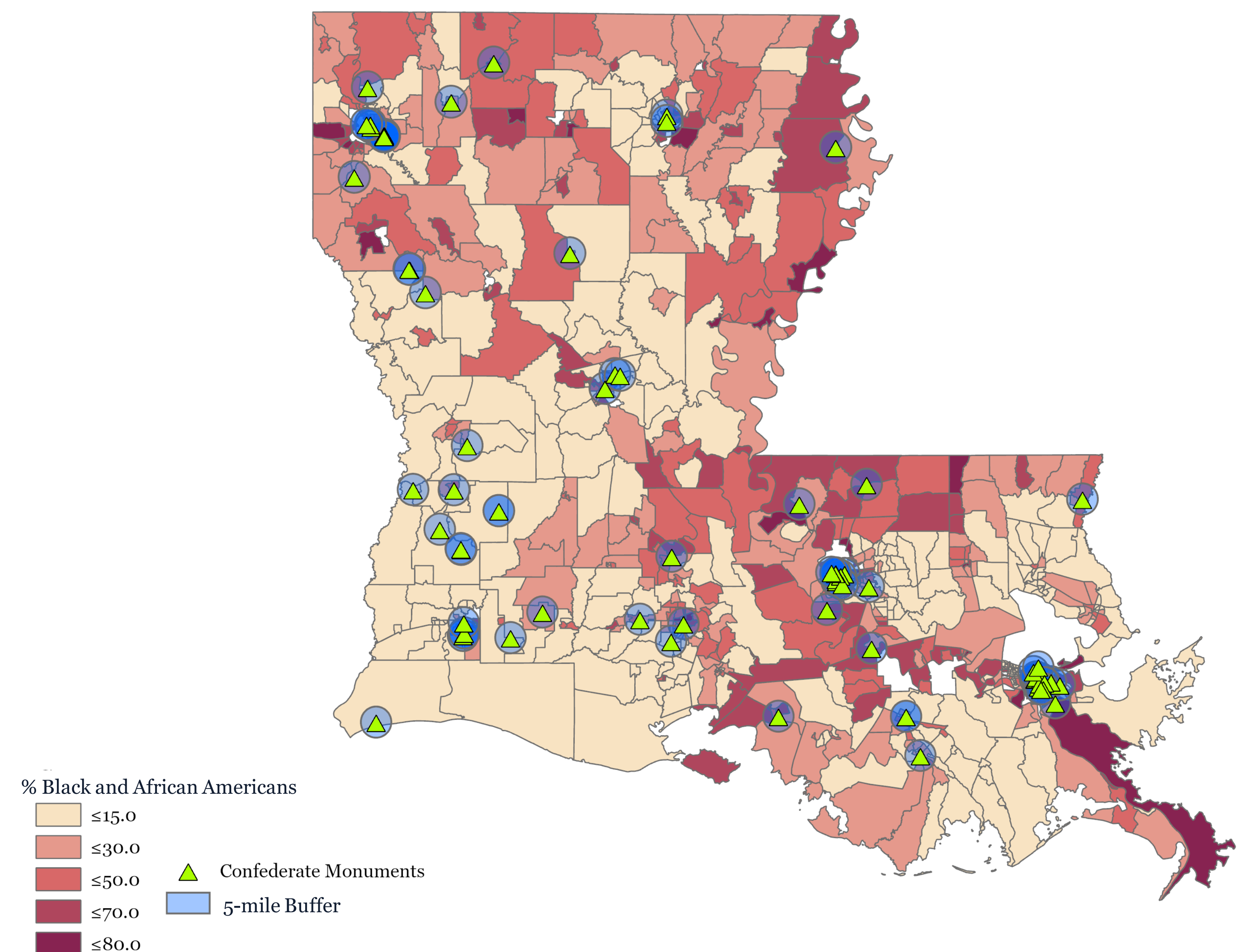
Introduction

- What influence does public remembrance of the Confederacy have in our current day politics?
- Do Confederate monuments still tend to exist in predominantly Black and African American neighborhoods than anywhere else?

Background

- Confederate symbols have been controversial for what they represent and what power they still have. From preserving Southern history or representing the continued oppression of Black and African Americans in the U.S., the impact these symbols have to the public is exists.
- According to the Southern Poverty Law Center, the highest peaks of construction of Confederate Symbols were during the early 1900's and 1950's-1960's, times of extreme civil rights tensions.
- Louisiana, being one of the states to have the most Confederate symbols in the U.S., fiery debate about the continued presence of Confederate Statues to the general public has already led to the removal of some Confederate monuments.

Distribution of Confederate Symbols and the Percentage of the Black Population by Census Tract in 2018

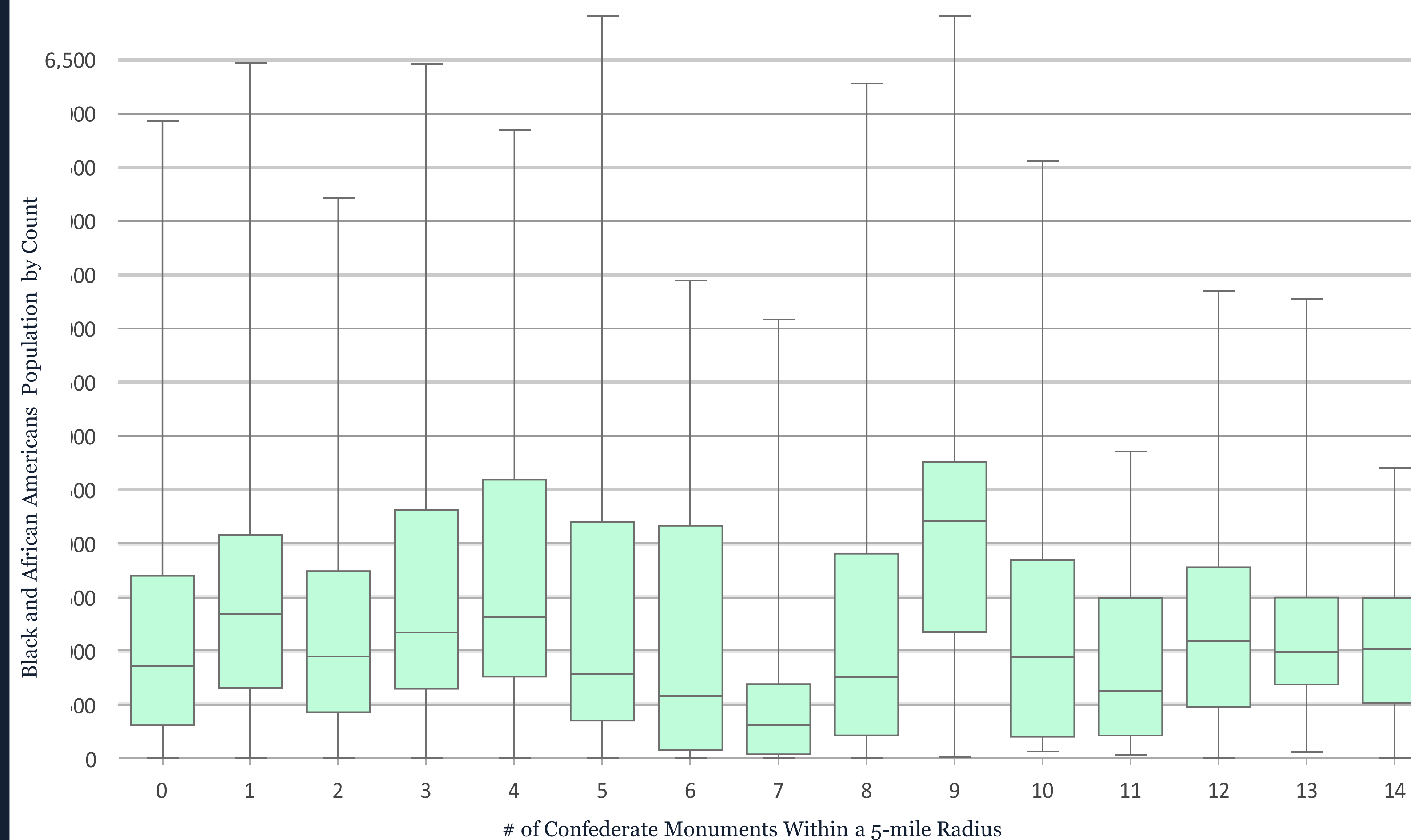


Top: Picture of a damaged Confederate statue in front of a courthouse after Hurricane Laura passed through Lake Charles, Louisiana, U.S., August 27, 2020.

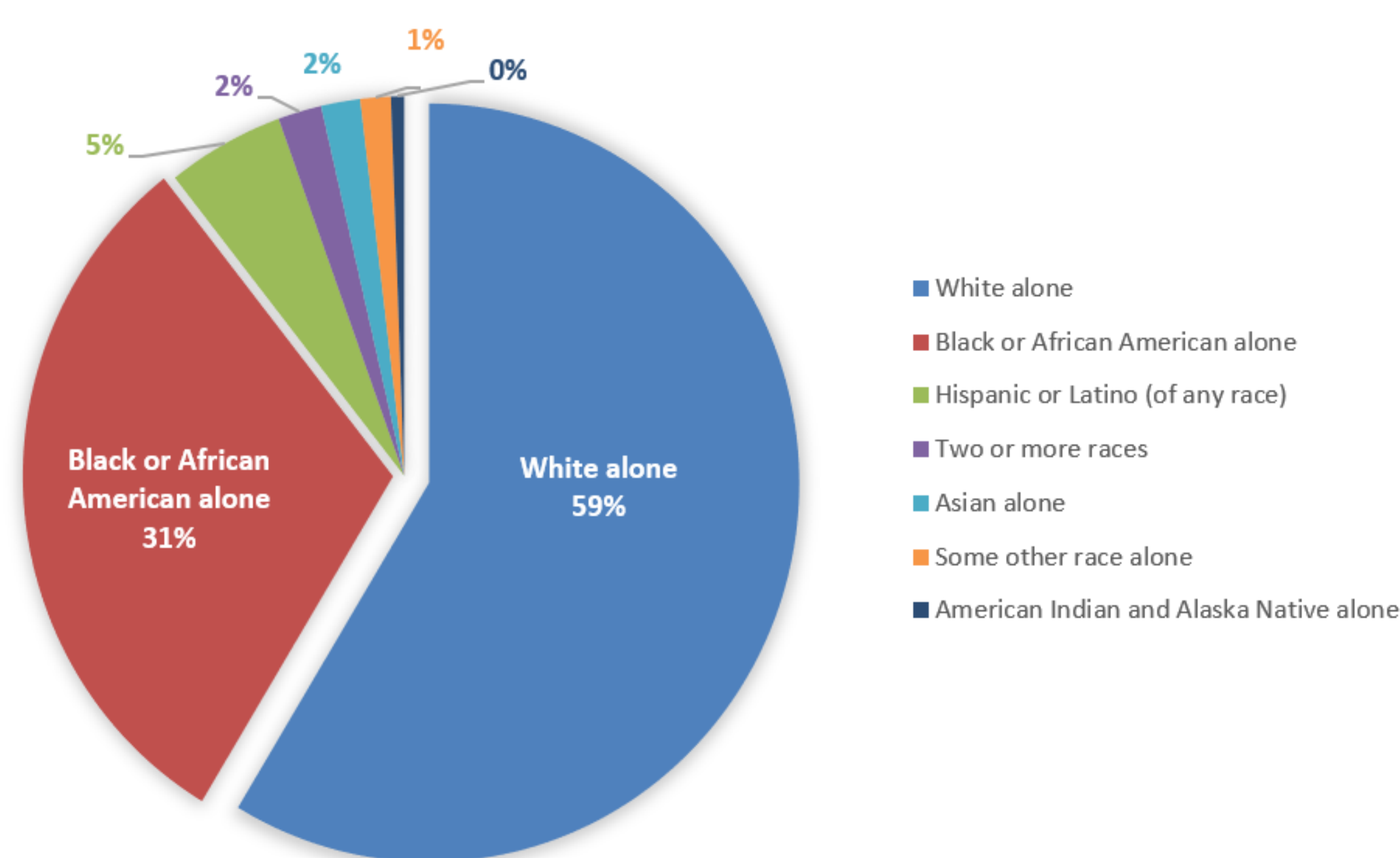
Conclusions

I can conclude from my research that there is not a direct relationship between the concentration of Confederate symbols to predominately Black and African American communities. Most of the Black and African American population in Louisiana don't live within a five-mile radius to a Confederate symbol. However, my research provides no evidence regarding the social impact of the general presence of Confederate symbols in a community.

Distribution of Black and African American Population to Confederate Monuments



POPULATION DISTRIBUTION OF LOUISIANA BY RACE AND ETHNICITY 2019



Data Sources

US Census Bureau, American Community Survey 2018 5-year estimates

Southern Poverty Law Center, Public Symbols of the Confederacy

The Independent, photo of 'Southern Defenders' monument